



## SUITE FEATURES

1. Approximately 9 ft. ceiling heights in principal rooms, defined as Living Rooms and Dining Rooms. Where bulkheads or dropped ceilings are required, the height of the ceiling will be less than 9 ft. Suites on levels 2, 3, 4, and 32 (in the East tower only) will have approximately 10 ft. ceiling heights in principal rooms, defined as Living Rooms and Dining Rooms. Suites on the Ground Floor, and levels 2, 3, 4, and 11 (in the West tower only) will have approximately 10 ft. ceiling heights in principal rooms. Where bulkheads or dropped ceilings are required, the height of the ceiling will be less than 10 ft; all measurements are calculated from the finished concrete slab floor to the underside of the concrete slab or finished ceiling above.
2. Entry door hardware to receive black finish. Entry door to be solid core stained wood, with painted custom surround.
3. Contemporary 4" baseboards in all areas except Bathroom(s) and Laundry Room, which have a tile baseboard.
4. Contemporary 2" casings throughout.
5. Flat panel interior doors with satin nickel lever hardware.
6. Framed mirrored sliding closet doors in Foyer and Bedroom(s), as per plan.
7. Internal Bedrooms to have transparent sliding glass doors and/or partitions, as per plan.
8. Suite walls primed and painted in latex flat finish off-white paint; Kitchen, Bathroom(s) and Laundry/Storage to be painted in latex eggshell off-white paint. Latex semi-gloss off-white paint on trim. All paint is low VOC.
9. White textured ceilings in all areas, except Kitchen, Bathroom(s) and Laundry/Storage, which have smooth painted ceilings.
10. Poured concrete finish to all Balconies. Painted underside to all Balconies. Terraces and Ground Floor Patios to receive concrete pavers.
11. Barbeque gas line provided for Ground Floor suites, Terrace suites 307, 308, 310, 324, 409, 410, 411, 412, 413, 414, 415, 416, 417, and 522 in the West tower, and 301, 302, 402, 403, 404, 405, 406, 407, 505, 506, and 507 in the East tower.
12. Exterior hose bib provided for Ground Floor suites, Terrace suites 307, 308, 310, 324, 409, 410, 411, 412, 413, 414, 415, 416, 417, and 522 in the West tower, and 301, 302, 402, 403, 404, 405, 406, 407, 505, 506, and 507 in the East tower.

## FLOORING FEATURES

13. Wood laminate flooring in the Foyer and Foyer closet, Hallway, Bedroom(s), Living/Dining Room, Den and Kitchen, as per plan.
14. Porcelain floor tile in Bathroom(s), as per plan.
15. Ceramic floor tile in Laundry/Storage areas, as per plan.

## KITCHEN FEATURES

16. Custom-designed contemporary Kitchen cabinetry, with integrated under-cabinet valance lighting and soft-close hardware.
17. Quartz countertop with single bowl stainless-steel, under-mount sink.
18. Matching Kitchen island or peninsula with quartz countertop and dining accommodations, as per plan.
19. Single-lever Kitchen faucet with pull-out head for ease of use.
20. Contemporary tile backsplash.
21. Studio, 1-bedroom, 1-bedroom plus den, 2-bedroom, and 2-bedroom plus den suites to receive European-style stainless-steel Kitchen appliances, including: 24" refrigerator with bottom mount freezer, 24" paneled dishwasher, 24" built-in electric cooktop and wall oven, hood fan vented to exterior, and microwave in island or peninsula. Suites without an island to receive built-in microwave with a trim kit in lieu of microwave in island or peninsula.
22. 3-bedroom and 3-bedroom plus den suites to receive European-style stainless-steel Kitchen appliances, including: 30" refrigerator with bottom mount freezer, 24" paneled dishwasher, 30" built-in electric cooktop and wall oven, hood fan vented to exterior, and microwave in island or peninsula.
23. Contemporary track light fixture.

## BATHROOM FEATURES

24. Low consumption toilets
25. Custom-designed Bathroom vanity and one-piece sink with integrated basin. Bathrooms to receive frameless mirror.
26. All Bathrooms to have light sconce above frameless vanity mirror. Pot light within the tub/shower.
27. Contemporary single-lever chrome faucet on vanity.
28. Contemporary chrome plumbing fixtures in shower or bathtub.



29. Acrylic deep soaker tub and wall tile surround up to ceiling, as per plan.
30. Clear tempered framed glass shower stalls, with preformed base and full-height wall tile surround, as per plan.
31. Chrome Bathroom accessories, including towel bar or ring, toilet paper holder, and shower rod.
32. Exhaust fan vented through a Heat Recovery Ventilation System.

### LAUNDRY ROOM FEATURES

33. Stacked, front loading washer and dryer, vented to the exterior.

### ELECTRICAL FEATURES

34. Suite hydro individually metered using "Smart Meter" technology.
35. Individual service panel with circuit breakers.
36. Pre-wired outlets for television, telephone and/or Internet connections in Living Room, Bedroom(s) and Den, as per plan.
37. Energy-efficient ceiling light fixtures provided in Foyer, Bedroom(s), Den, and Storage, as per plan.
38. Capped ceiling outlet in Dining Room as per plan. Switch controlled outlet to be provided in Living Room.

39. Capped ceiling outlet above Kitchen island or peninsula, as per plan.
40. All appliances connected and ready to use.
41. White decora-style switches and receptacles throughout.
42. Exterior light fixtures for Ground Floor suites, Terrace suites 307, 308, 310, 311, 312, 313, 314, 315, 324, 409, 410, 411, 412, 413, 414, 415, 416, 417, and 522 in the West tower, and 203, 204, 205, 301, 302, 402, 403, 404, 405, 406, 407, 505, 506, and 507 in the East tower.

### ADVANCED SECURITY FEATURES

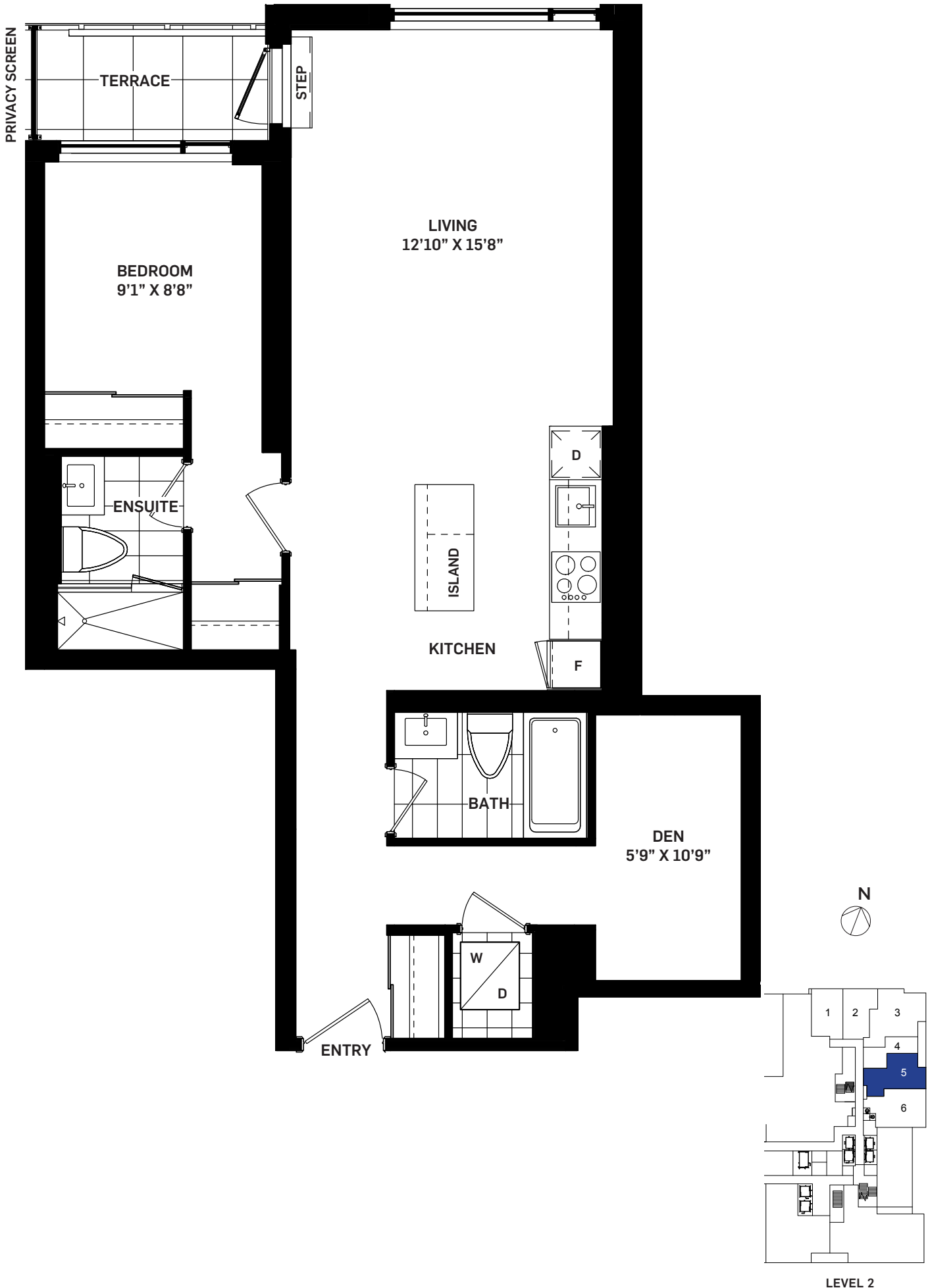
43. Cameras at all visitor entrances, allowing for in-suite viewing through cable television (as per applicable television provider).
44. Enter-phone at Tower Lobbies to facilitate visitor access.
45. Resident key fob access to all Amenity Areas and Residential Common Areas.
46. Convenient underground parking with cameras at pre-selected locations, along with two-way voice communication to Concierge or monitoring station.
47. Suite entry door(s) to have rough-in for keypad and door contact for intrusion alarm system.
48. Rough-in intrusion provision on windows and exterior doors for Ground Floor suites only.



Rhapsody  
1+G

# ARTWORKS TOWER

<b>1 BEDROOM + DEN</b>	
Suite Area	825 sq.ft.
Outdoor Area	44 sq.ft.
Total Area	869 sq.ft.



All areas and stated room dimensions are approximate. Floor area measured in accordance with Tarion bulletin #22. Actual living areas will vary from stated floor areas. Size and location of windows may vary. The purchaser acknowledges that the actual unit purchased may be a reversed layout to the plan shown. Illustration is artist's concept. E. & O. E.

Outdoor area will vary depending on suite location within the building. Please speak with a Sales Representative for details.

**Daniels**  
love where you live™